



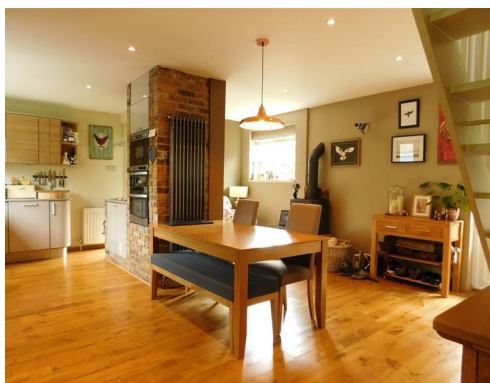
MatthewJames

St James House | St James Road | Surbiton | Surrey KT6 4QH

T: +44 (0) 20 8390 2266

E: [enquiries@matthewjamesestateagents.co.uk](mailto:enquiries@matthewjamesestateagents.co.uk)

[www.matthewjamesestateagents.co.uk](http://www.matthewjamesestateagents.co.uk)



## Weston Lodge, Thames Ditton, KT7 0EZ

**TO LET**

A well presented three double bedroom semi detached house in this terrace of period properties located close to Thames Ditton and offering easy access to Esher and Kingston. The accommodation, which has been finished to a high standard, comprises; Porch way entrance, spacious kitchen/dining/breakfast room, main reception, utility room, downstairs WC, Master bedroom with en-suite shower room, two further double bedrooms, one with en-suite dressing room and family bathroom with separate shower cubicle. The property benefits from off street parking, front and rear gardens, double glazing and independent gas central heating, is offered unfurnished and is available from early March. Council Tax Band E

**£2,750 Per Calendar Month per calendar month (other fees may apply)**

**EPC Rating: D**

Weston Lodge, Thames Ditton, KT7 0EZ

These sales particulars have been prepared as a general guide only. We have not carried out a detailed survey, tested the services, appliances or specific fittings. Your solicitor must confirm lease or freehold details. Carpets, curtains, gas fires, electrical goods/fittings or other fixtures, unless expressly mentioned, are not included in the sale of this property. If there are any important matter which are likely to affect your decision to buy, please contact this office and we will be pleased to check the information for you before viewing the property. Before this property can be removed from the market , all offer.; must be checked by our Financial Services Department. This is a service we offer on behalf of our clients. Please note that our room sizes are quoted in metres to the nearest tenth of a meter on a wall-to-wall basis. The imperial equivalent is only intended as an approximate guide for those not fully conversant with the metric measurements. All measurements have been taken using a sonic tape measure and therefore may be subject to a small margin of error.

